

Communities in Control:
Developing
Peterborough's approach
to neighbourhood
working





Strategic Drivers for Change



Strategic Drivers for Change - National

- Strong and Prosperous Communities (2006 White Paper)
- Sustainable Communities Act (2007)
- Communities in Control: Real People, Real Power (2008 White Paper)
- Comprehensive Area Assessments



Strategic Drivers for Change - Local

- Sustainable Community Strategy
- Local Area Agreement
- Growth agenda
- PCC senior management restructure





Neighbourhood Management



Neighbourhood Management – Overview

- Framework enabling residents and service providers to work together
- Locality based approach to service design, redesign and delivery
- Positive response to national, regional and local policies – Local Government White Paper, CAA, LAA etc
- Opportunity to ‘connect’ things more effectively and to deliver more creative results
- Opportunity for all elected Members to get involved
- Unique to each area – community, local authority area, region



Neighbourhood Management – key ingredients

1. Clearly defined neighbourhood
2. Neighbourhood Manager
3. Resident involvement
4. Local partnership
5. Quality information
6. Support from the LSP and the Local Authority
7. Commitment of service providers



Where next for Peterborough?

NEIGHBOURHOODS STRATEGIC PARTNERSHIP

- Part of the GPP Governance Framework
- Oversees delivery of relevant LAA performance
 - Pools resources
 - Unblocks blockages

JOINT DELIVERY GROUP

- Senior Officer group
- Peterborough-wide overview
- Regional and national strategy and policy
- Identifies synergies, economies of scale
 - Agrees service change

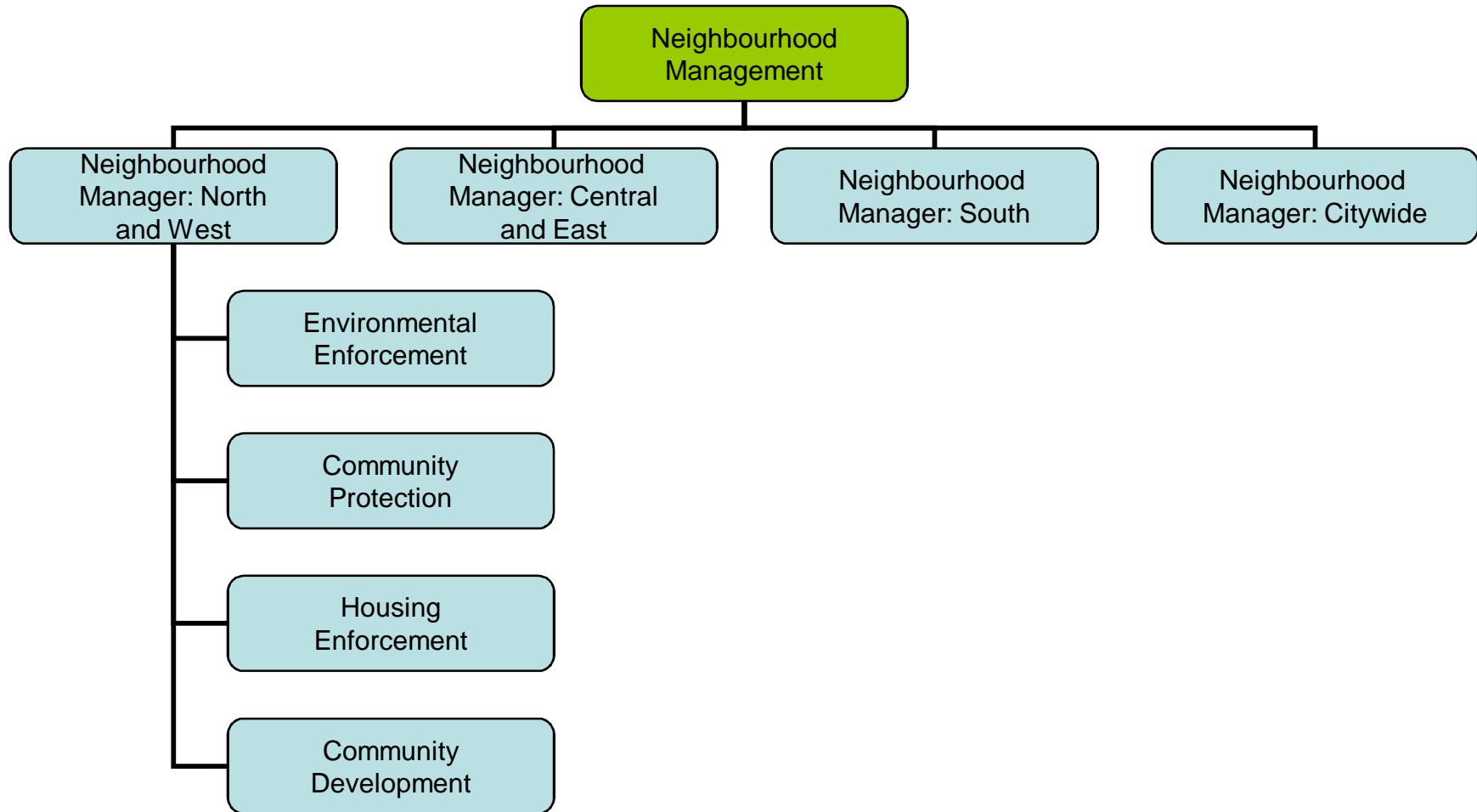
NEIGHBOURHOOD 'PARTNERSHIPS'

- Resident-led
- Focus on local issues – current and future
- Able to hold public services to account

NEIGHBOURHOOD DELIVERY TEAMS

- Front-line Officer group
 - Multi-agency
- Development of responses and solutions
 - Accountable to the community

Neighbourhood Management – PCC



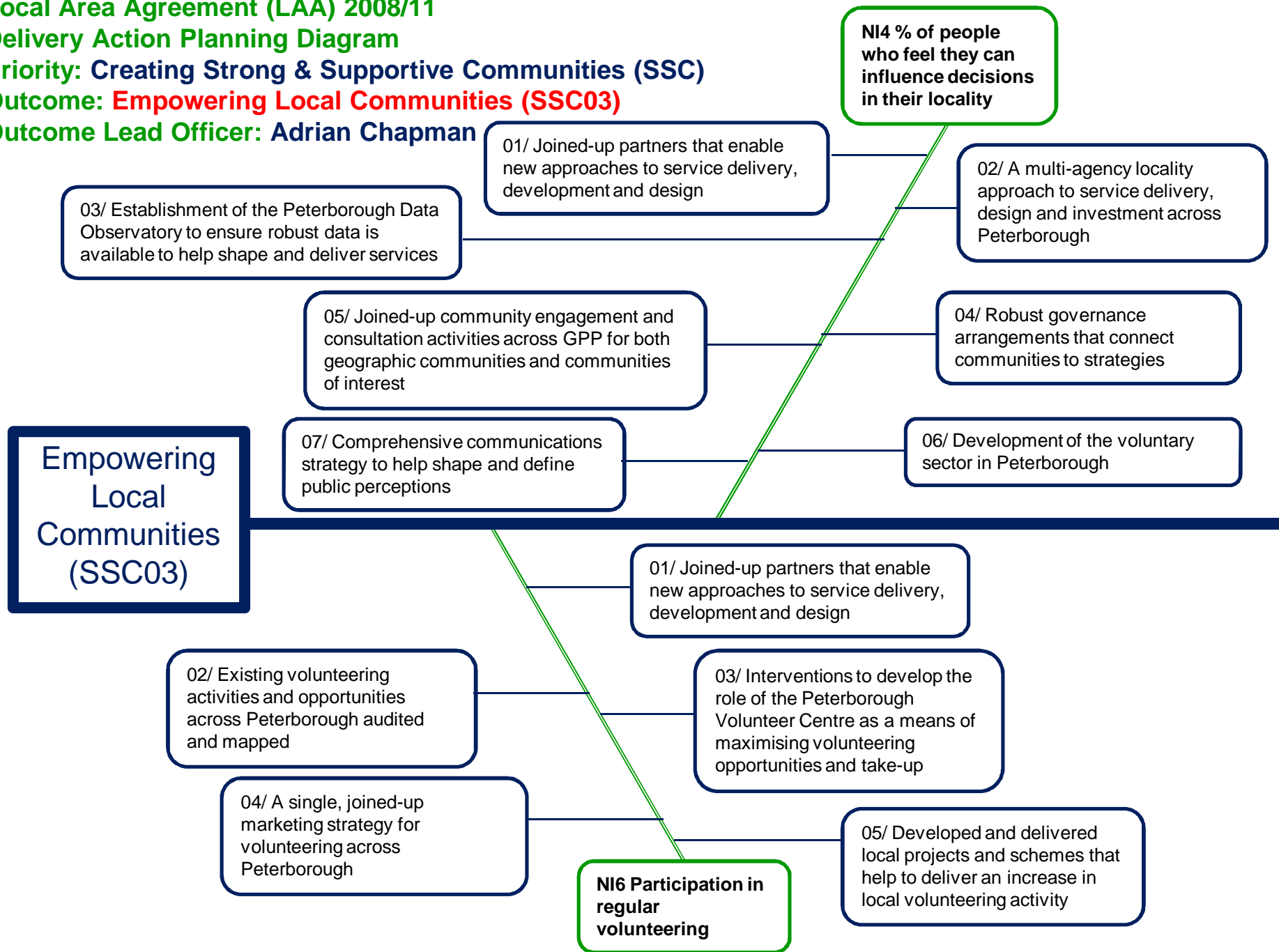
Local Area Agreement (LAA) 2008/11

Delivery Action Planning Diagram

Priority: Creating Strong & Supportive Communities (SSC)

Outcome: Empowering Local Communities (SSC03)

Outcome Lead Officer: Adrian Chapman



Cross Cutting Impacts Diagram

